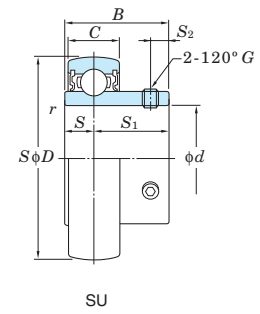
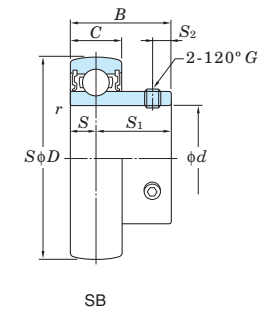
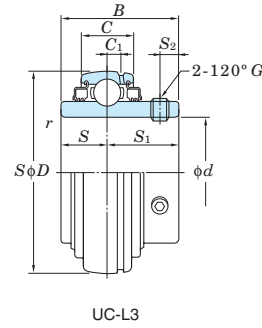
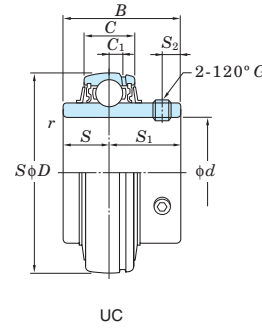


Ball bearing inserts

UC, SB, SU
Cylindrical bore (with set screws)
d (60) ~ 140 mm



| Shaft Dia. mm inch <i>d</i> | Dimensions | | | | | | | Basic Load Ratings kN | | Factor <i>f₀</i> | Bearing No. | | Dimensions | | | | | | Set Screw Brg. Bore <i>G</i> | | Mass kg | | | | |
|--------------------------------------|------------------------|------------------------|------------------------|-------------------------------|------------------------------------|------------------------|------------------------------------|------------------------------------|----------------------|--------------------------------|-----------------------|----------|------------|------------------------------------|------------------------|------------------------------------|------------------------------------|------------|------------------------------------|-------|------------|-------|---------|-----------|------|
| | <i>D</i> mm inch | <i>B</i> mm inch | <i>C</i> mm inch | <i>r</i> (min.) mm inch | <i>C₁</i> mm inch | <i>S</i> mm inch | <i>S₁</i> mm inch | <i>S₂</i> mm inch | <i>C_r</i> | | <i>C_{0r}</i> | Standard | L3 Type | <i>C₁</i> mm inch | <i>S</i> mm inch | <i>S₁</i> mm inch | <i>S₂</i> mm inch | mm inch | mm inch | | | | | | |
| - | 2 7/16 | 110 | 4.331 | 65.1 | 2.563 | 27 | 1.063 | 1.5 | 0.059 | 52.4 | 36.2 | 14.4 | UC212-39 | UC212-39L3 | 7.5 | 0.295 | 25.4 | 1.000 | 39.7 | 1.563 | 10.5 | 0.413 | - | 3/8-24UNF | 1.45 |
| | | 120 | 4.724 | 65.1 | 2.563 | 28 | 1.102 | 1.5 | 0.059 | 57.2 | 40.1 | 14.4 | UCX12-39 | UCX12-39L3 | 7.5 | 0.295 | 25.4 | 1.000 | 39.7 | 1.563 | 12 | 0.472 | - | 1/2-20UNF | 1.95 |
| | | 130 | 5.118 | 71 | 2.795 | 36 | 1.417 | 2.1 | 0.083 | 81.9 | 52.2 | 13.2 | UC312-39 | UC312-39L3 | 11.5 | 0.453 | 26 | 1.024 | 45 | 1.772 | 12 | 0.472 | M12x1.5 | - | 2.50 |
| - | 2 1/2 | 120 | 4.724 | 65.1 | 2.563 | 28 | 1.102 | 1.5 | 0.059 | 57.2 | 40.1 | 14.4 | UC213-40 | UC213-40L3 | 7.5 | 0.295 | 25.4 | 1.000 | 39.7 | 1.563 | 12 | 0.472 | - | 1/2-20UNF | 1.94 |
| | | 125 | 4.921 | 74.6 | 2.937 | 30 | 1.181 | 1.5 | 0.059 | 62.2 | 44.1 | 14.5 | UCX13-40 | UCX13-40L3 | 9 | 0.354 | 30.2 | 1.189 | 44.4 | 1.748 | 12 | 0.472 | - | 1/2-20UNF | 2.61 |
| | | 140 | 5.512 | 75 | 2.953 | 38 | 1.496 | 2.1 | 0.083 | 92.7 | 59.9 | 13.2 | UC313-40 | UC313-40L3 | 12 | 0.472 | 30 | 1.181 | 45 | 1.772 | 12 | 0.472 | M12x1.5 | - | 3.24 |
| 65 | - | 120 | 4.724 | 65.1 | 2.563 | 28 | 1.102 | 1.5 | 0.059 | 57.2 | 40.1 | 14.4 | UC213 | UC213L3 | 7.5 | 0.295 | 25.4 | 1.000 | 39.7 | 1.563 | 12 | 0.472 | M12x1.5 | - | 1.86 |
| | | 125 | 4.921 | 74.6 | 2.937 | 30 | 1.181 | 1.5 | 0.059 | 62.2 | 44.1 | 14.5 | UCX13 | UCX13L3 | 9 | 0.354 | 30.2 | 1.189 | 44.4 | 1.748 | 12 | 0.472 | M12x1.5 | - | 2.52 |
| | | 140 | 5.512 | 75 | 2.953 | 38 | 1.496 | 2.1 | 0.083 | 92.7 | 59.9 | 13.2 | UC313 | UC313L3 | 12 | 0.472 | 30 | 1.181 | 45 | 1.772 | 12 | 0.472 | M12x1.5 | - | 3.16 |
| - | 2 3/4 | 125 | 4.921 | 74.6 | 2.937 | 30 | 1.181 | 1.5 | 0.059 | 62.2 | 44.1 | 14.5 | UC214-44 | UC214-44L3 | 9 | 0.354 | 30.2 | 1.189 | 44.4 | 1.748 | 12 | 0.472 | - | 1/2-20UNF | 2.06 |
| | | 130 | 5.118 | 77.8 | 3.063 | 32 | 1.260 | 1.5 | 0.059 | 67.4 | 48.3 | 14.5 | UCX14-44 | UCX14-44L3 | 9 | 0.354 | 33.3 | 1.311 | 44.5 | 1.752 | 12 | 0.472 | - | 1/2-20UNF | 2.75 |
| | | 150 | 5.906 | 78 | 3.071 | 40 | 1.575 | 2.1 | 0.083 | 104 | 68.2 | 13.2 | UC314-44 | UC314-44L3 | 12.5 | 0.492 | 33 | 1.299 | 45 | 1.772 | 12 | 0.472 | M12x1.5 | - | 3.91 |
| 70 | - | 125 | 4.921 | 74.6 | 2.937 | 30 | 1.181 | 1.5 | 0.059 | 62.2 | 44.1 | 14.5 | UC214 | UC214L3 | 9 | 0.354 | 30.2 | 1.189 | 44.4 | 1.748 | 12 | 0.472 | M12x1.5 | - | 2.05 |
| | | 130 | 5.118 | 77.8 | 3.063 | 32 | 1.260 | 1.5 | 0.059 | 67.4 | 48.3 | 14.5 | UCX14 | UCX14L3 | 9 | 0.354 | 33.3 | 1.311 | 44.5 | 1.752 | 12 | 0.472 | M12x1.5 | - | 2.74 |
| | | 150 | 5.906 | 78 | 3.071 | 40 | 1.575 | 2.1 | 0.083 | 104 | 68.2 | 13.2 | UC314 | UC314L3 | 12.5 | 0.492 | 33 | 1.299 | 45 | 1.772 | 12 | 0.472 | M12x1.5 | - | 3.90 |
| - | 2 15/16 | 130 | 5.118 | 77.8 | 3.063 | 32 | 1.260 | 1.5 | 0.059 | 67.4 | 48.3 | 14.5 | UC215-47 | UC215-47L3 | 9 | 0.354 | 33.3 | 1.311 | 44.5 | 1.752 | 12 | 0.472 | - | 1/2-20UNF | 2.23 |
| | | 140 | 5.512 | 82.6 | 3.252 | 33 | 1.299 | 1.5 | 0.059 | 72.7 | 53.0 | 14.6 | UCX15-47 | UCX15-47L3 | 9 | 0.354 | 33.3 | 1.311 | 49.3 | 1.941 | 14 | 0.551 | - | 1/2-20UNF | 3.43 |
| | | 160 | 6.299 | 82 | 3.228 | 42 | 1.654 | 2.1 | 0.083 | 113 | 77.2 | 13.2 | UC315-47 | UC315-47L3 | 14.5 | 0.571 | 32 | 1.260 | 50 | 1.969 | 14 | 0.551 | M14x1.5 | - | 4.72 |
| 75 | - | 130 | 5.118 | 77.8 | 3.063 | 32 | 1.260 | 1.5 | 0.059 | 67.4 | 48.3 | 14.5 | UC215 | UC215L3 | 9 | 0.354 | 33.3 | 1.311 | 44.5 | 1.752 | 12 | 0.472 | M12x1.5 | - | 2.21 |
| | | 140 | 5.512 | 82.6 | 3.252 | 33 | 1.299 | 1.5 | 0.059 | 72.7 | 53.0 | 14.6 | UCX15 | UCX15L3 | 9 | 0.354 | 33.3 | 1.311 | 49.3 | 1.941 | 14 | 0.551 | M12x1.5 | - | 3.41 |
| | | 160 | 6.299 | 82 | 3.228 | 42 | 1.654 | 2.1 | 0.083 | 113 | 77.2 | 13.2 | UC315 | UC315L3 | 14.5 | 0.571 | 32 | 1.260 | 50 | 1.969 | 14 | 0.551 | M14x1.5 | - | 4.70 |
| - | 3 | 130 | 5.118 | 77.8 | 3.063 | 32 | 1.260 | 1.5 | 0.059 | 67.4 | 48.3 | 14.5 | UC215-48 | UC215-48L3 | 9 | 0.354 | 33.3 | 1.311 | 44.5 | 1.752 | 12 | 0.472 | - | 1/2-20UNF | 2.12 |
| | | 140 | 5.512 | 82.6 | 3.252 | 33 | 1.299 | 1.5 | 0.059 | 72.7 | 53.0 | 14.6 | UCX15-48 | UCX15-48L3 | 9 | 0.354 | 33.3 | 1.311 | 49.3 | 1.941 | 14 | 0.551 | - | 1/2-20UNF | 3.32 |
| | | 160 | 6.299 | 82 | 3.228 | 42 | 1.654 | 2.1 | 0.083 | 113 | 77.2 | 13.2 | UC315-48 | UC315-48L3 | 14.5 | 0.571 | 32 | 1.260 | 50 | 1.969 | 14 | 0.551 | M14x1.5 | - | 4.61 |
| - | 3 1/8 | 140 | 5.512 | 82.6 | 3.252 | 33 | 1.299 | 2 | 0.079 | 72.7 | 53.0 | 14.6 | UC216-50 | UC216-50L3 | 9 | 0.354 | 33.3 | 1.311 | 49.3 | 1.941 | 14 | 0.551 | - | 1/2-20UNF | 2.84 |
| | | 140 | 5.512 | 82.6 | 3.252 | 33 | 1.299 | 2 | 0.079 | 72.7 | 53.0 | 14.6 | UC216 | UC216L3 | 9 | 0.354 | 33.3 | 1.311 | 49.3 | 1.941 | 14 | 0.551 | M12x1.5 | - | 2.79 |
| | | 150 | 5.906 | 85.7 | 3.374 | 35 | 1.378 | 2 | 0.079 | 84.0 | 61.9 | 14.5 | UCX16 | UCX16L3 | 10 | 0.394 | 34.1 | 1.343 | 51.6 | 2.031 | 14 | 0.551 | M12x1.5 | - | 3.87 |
| - | 3 1/4 | 170 | 6.693 | 86 | 3.386 | 44 | 1.732 | 2.1 | 0.083 | 123 | 86.7 | 13.3 | UC316 | UC316L3 | 15 | 0.591 | 34 | 1.339 | 52 | 2.047 | 14 | 0.551 | M14x1.5 | - | 5.60 |
| | | 150 | 5.906 | 85.7 | 3.374 | 35 | 1.378 | 2 | 0.079 | 84.0 | 61.9 | 14.5 | UC217-52 | UC217-52L3 | 10 | 0.394 | 34.1 | 1.343 | 51.6 | 2.031 | 14 | 0.551 | - | 1/2-20UNF | 3.66 |
| | | 150 | 5.906 | 85.7 | 3.374 | 35 | 1.378 | 2 | 0.079 | 84.0 | 61.9 | 14.5 | UC217 | UC217L3 | 10 | 0.394 | 34.1 | 1.343 | 51.6 | 2.031 | 14 | 0.551 | M12x1.5 | - | 3.45 |
| 85 | - | 160 | 6.299 | 96 | 3.780 | 38 | 1.496 | 2 | 0.079 | 96.1 | 71.5 | 14.5 | UCX17 | UCX17L3 | 11 | 0.433 | 39.7 | 1.563 | 56.3 | 2.217 | 15 | 0.591 | M12x1.5 | - | 5.05 |
| | | 180 | 7.087 | 96 | 3.780 | 46 | 1.811 | 3 | 0.118 | 133 | 96.8 | 13.3 | UC317 | UC317L3 | 15 | 0.591 | 40 | 1.575 | 56 | 2.205 | 16 | 0.630 | M16x1.5 | - | 6.90 |
| | | 160 | 6.299 | 96 | 3.780 | 38 | 1.496 | 2 | 0.079 | 96.1 | 71.5 | 14.5 | UCX17-55 | UCX17-55L3 | 11 | 0.433 | 39.7 | 1.563 | 56.3 | 2.217 | 15 | 0.591 | - | 1/2-20UNF | 4.80 |
| - | 3 1/2 | 160 | 6.299 | 96 | 3.780 | 38 | 1.496 | 2 | 0.079 | 96.1 | 71.5 | 14.5 | UC218-56 | UC218-56L3 | 11 | 0.433 | 39.7 | 1.563 | 56.3 | 2.217 | 15 | 0.591 | - | 1/2-20UNF | 4.46 |
| | | 190 | 7.480 | 96 | 3.780 | 48 | 1.890 | 3 | 0.118 | 143 | 107 | 13.3 | UC318-56 | UC318-56L3 | 15.5 | 0.610 | 40 | 1.575 | 56 | 2.205 | 16 | 0.630 | M16x1.5 | - | 8.03 |
| | | 160 | 6.299 | 96 | 3.780 | 38 | 1.496 | 2 | 0.079 | 96.1 | 71.5 | 14.5 | UC218 | UC218L3 | 11 | 0.433 | 39.7 | 1.563 | 56.3 | 2.217 | 15 | 0.591 | M12x1.5 | - | 4.35 |
| 90 | - | 170 | 6.693 | 104 | 4.094 | 40 | 1.575 | 2 | 0.079 | 109 | 81.9 | 14.4 | UCX18 | - | 11.5 | 0.453 | 42.9 | 1.689 | 61.1 | 2.406 | 16 | 0.630 | M14x1.5 | - | 6.00 |
| | | 190 | 7.480 | 96 | 3.780 | 48 | 1.890 | 3 | 0.118 | 143 | 107 | 13.3 | UC318 | UC318L3 | 15.5 | 0.610 | 40 | 1.575 | 56 | 2.205 | 16 | 0.630 | M16x1.5 | - | 7.87 |
| | | 200 | 7.874 | 103 | 4.055 | 50 | 1.969 | 3 | 0.118 | 153 | 119 | 13.3 | UC319 | UC319L3 | 16.5 | 0.650 | 41 | 1.614 | 62 | 2.441 | 18 | 0.709 | M16x1.5 | - | 8.91 |
| 100 | - | 190 | 7.480 | 117.5 | 4.626 | 43 | 1.693 | 2.1 | 0.083 | 133 | 105 | 14.4 | UCX20 | - | 13 | 0.512 | 49.2 | 1.937 | 68.3 | 2.689 | 18 | 0.709 | M16x1.5 | - | 8.56 |
| | | 215 | 8.465 | 108 | 4.252 | 54 | 2.126 | 3 | 0.118 | 173 | 141 | 13.2 | UC320 | UC320L3 | 18 | 0.709 | 42 | 1.654 | 66 | 2.598 | 20 | 0.787 | M18x1.5 | - | 11.2 |
| | | 190 | 7.480 | 117.5 | 4.626 | 43 | 1.693 | 2.1 | 0.083 | 133 | 105 | 14.4 | UCX20-63 | - | 13 | 0.512 | 49.2 | 1.937 | 68.3 | 2.689 | 18 | 0.709 | - | 5/8-18UNF | 8.56 |
| - | 3 15/16 | 215 | 8.465 | 108 | 4.252 | 54 | 2.126 | 3 | 0.118 | 173 | 141 | 13.2 | UC320-63 | UC320-63L3 | 18 | 0.709 | 42 | 1.654 | 66 | 2.598 | 20 | 0.787 | M18x1.5 | - | 11.2 |
| | | 190 | 7.480 | 117.5 | 4.626 | 43 | 1.693 | 2.1 | 0.083 | 133 | 105 | 14.4 | UCX20-64 | - | 13 | 0.512 | 49.2 | 1.937 | 68.3 | 2.689 | 18 | 0.709 | - | 5/8-18UNF | 8.33 |
| | | 215 | 8.465 | 108 | 4.252 | 54 | 2.126 | 3 | 0.118 | 173 | 141 | 13.2 | UC320-64 | UC320-64L3 | 18 | 0.709 | 42 | 1.654 | 66 | 2.598 | 20 | 0.787 | M18x1. | | |